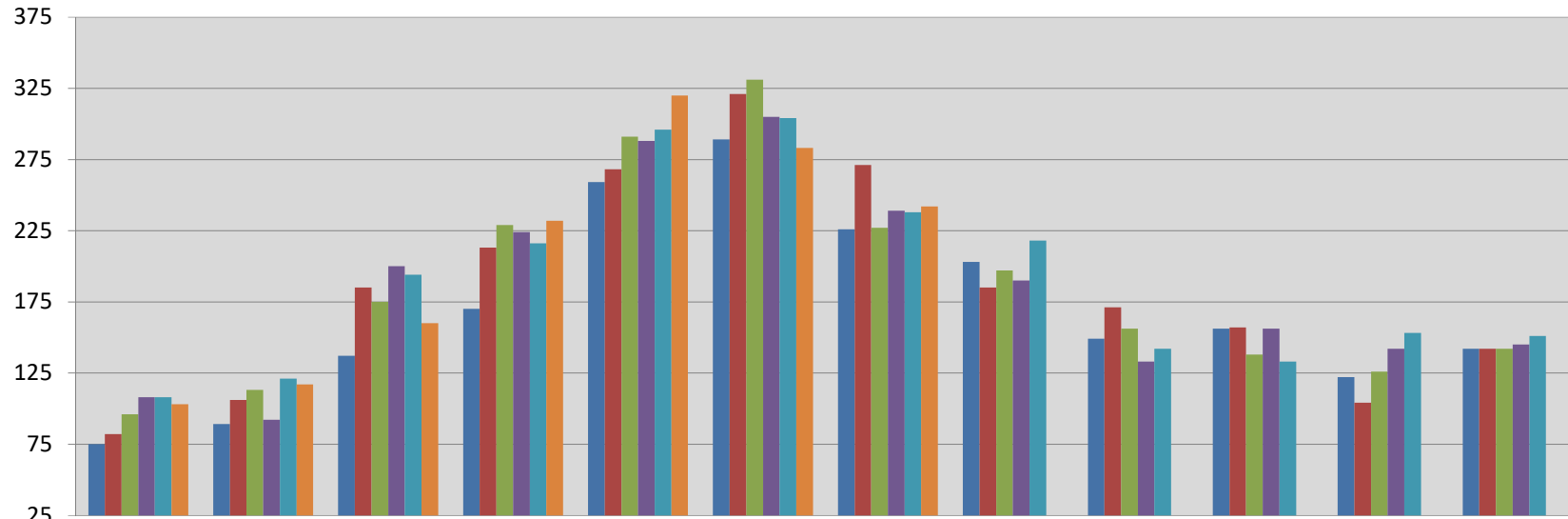




## Single Family Homes Sales Per Month in Boone County, Missouri

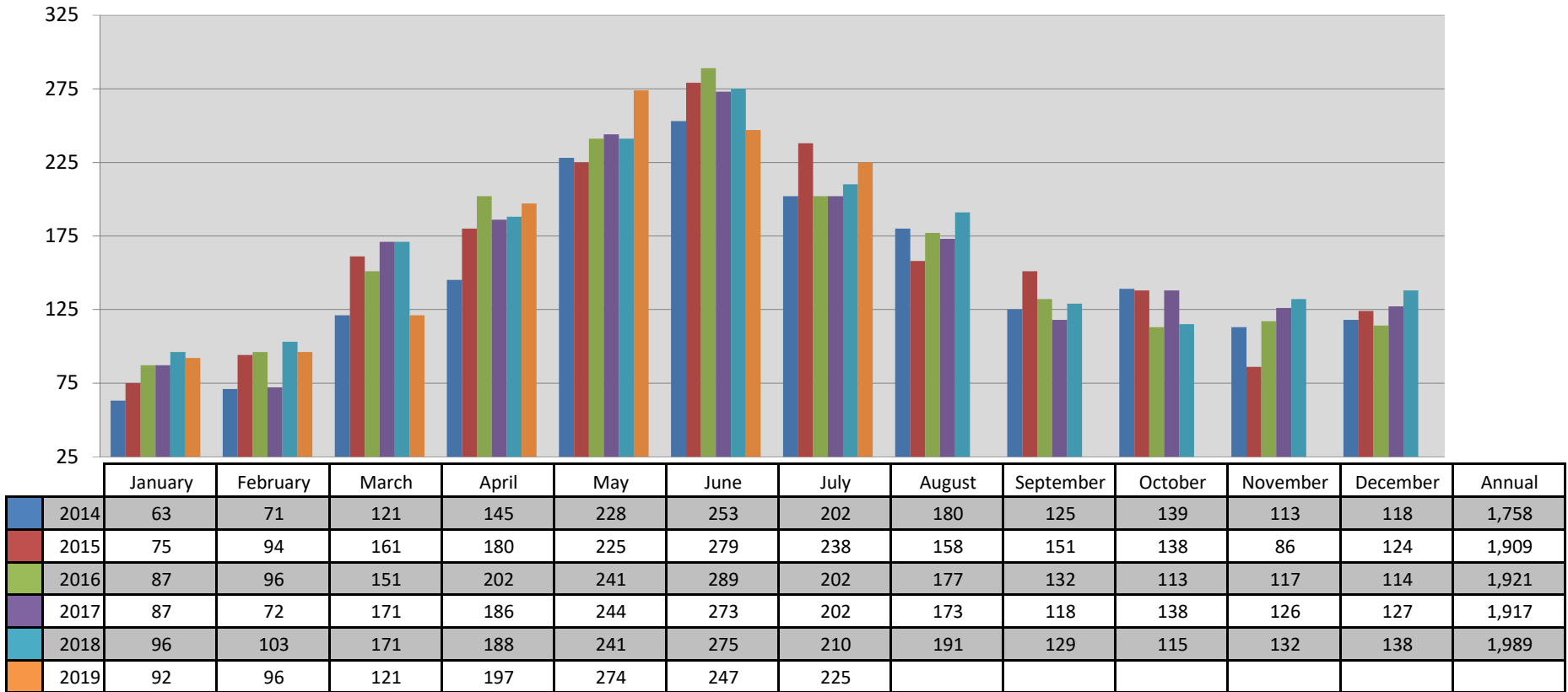


	January	February	March	April	May	June	July	August	September	October	November	December	Annual
2014	75	89	137	170	259	289	226	203	149	156	122	142	2,017
2015	82	106	185	213	268	321	271	185	171	157	104	142	2,205
2016	96	113	175	229	291	331	227	197	156	138	126	142	2,221
2017	108	92	200	224	288	305	239	190	133	156	142	145	2,222
2018	108	121	194	216	296	304	238	218	142	133	153	151	2,274
2019	103	117	160	232	320	283	242						

This representation is based in whole or in part on the data supplied by the Columbia Board of REALTORS® (CBOR). CBOR does not guarantee nor is in any way responsible for its accuracy. Data maintained by CBOR may not reflect all real estate activity in the market.



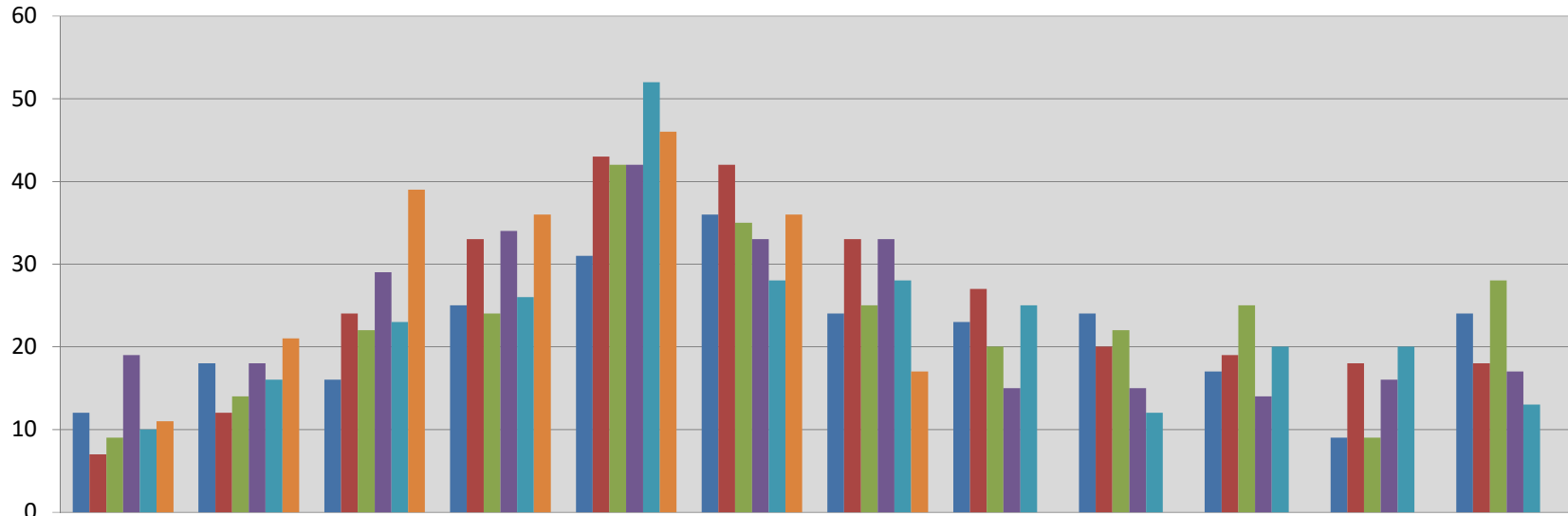
## Existing Single Family Homes Sales Per Month in Boone County, Missouri



This representation is based in whole or in part on the data supplied by the Columbia Board of REALTORS® (CBOR). CBOR does not guarantee nor is in any way responsible for its accuracy. Data maintained by CBOR may not reflect all real estate activity in the market.



## New Construction Single Family Homes Sales Per Month in Boone County, MO

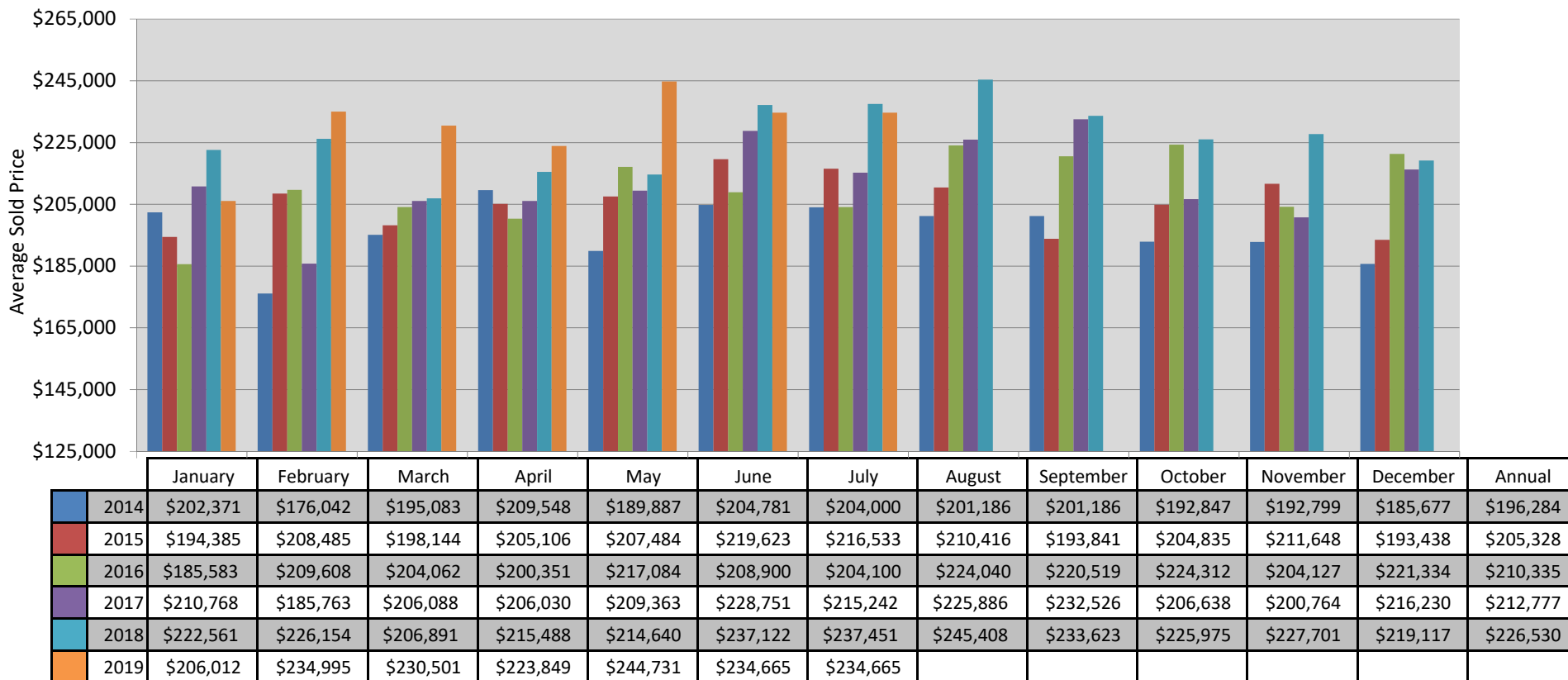


	January	February	March	April	May	June	July	August	September	October	November	December	Annual
2014	12	18	16	25	31	36	24	23	24	17	9	24	259
2015	7	12	24	33	43	42	33	27	20	19	18	18	296
2016	9	14	22	24	42	35	25	20	22	25	9	28	275
2017	19	18	29	34	42	33	33	15	15	14	16	17	285
2018	10	16	23	26	52	28	28	25	12	20	20	13	273
2019	11	21	39	36	46	36	17						

This representation is based in whole or in part on the data supplied by the Columbia Board of REALTORS® (CBOR). CBOR does not guarantee nor is in any way responsible for its accuracy. Data maintained by CBOR may not reflect all real estate activity in the market.



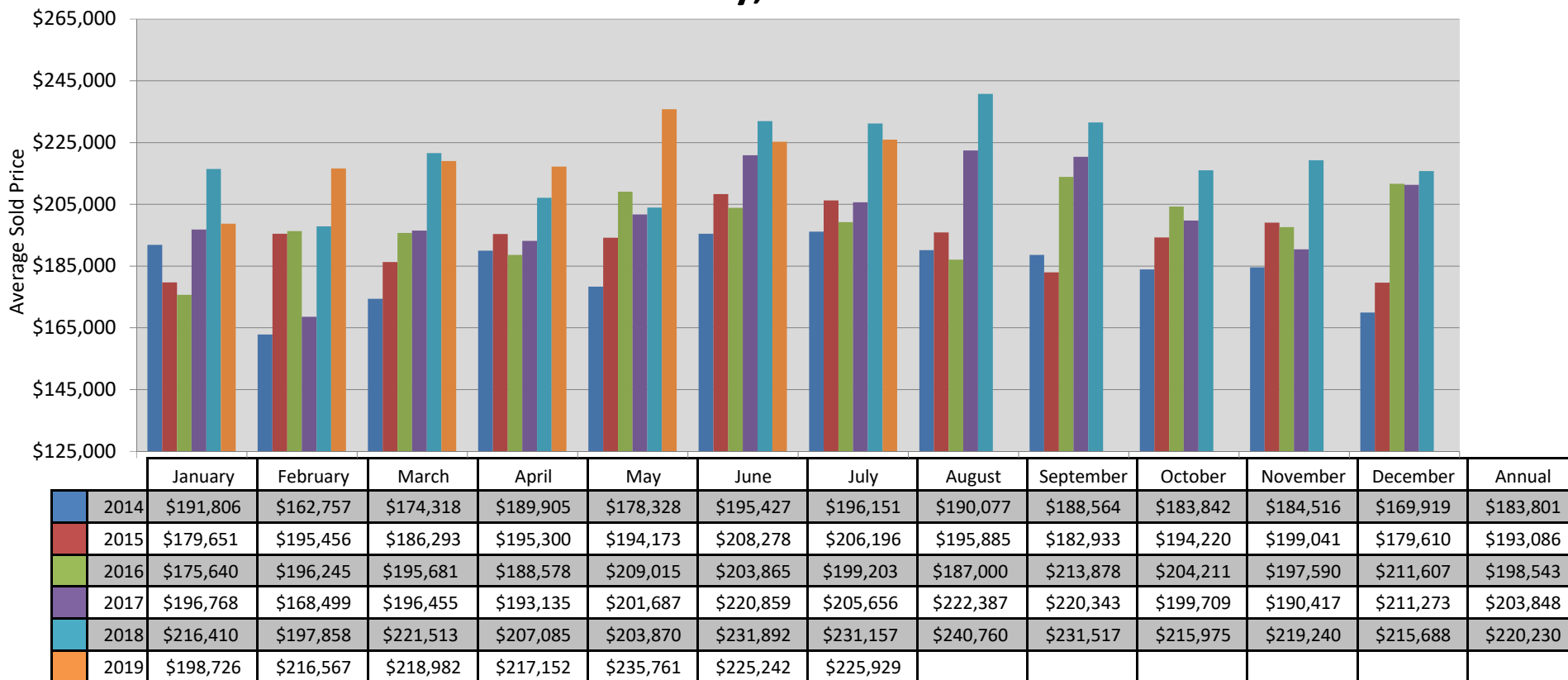
## Single Family Homes Average Sold Price Per Month in Boone County, Missouri



This representation is based in whole or in part on the data supplied by the Columbia Board of REALTORS® (CBOR). CBOR does not guarantee nor is in any way responsible for its accuracy. Data maintained by CBOR may not reflect all real estate activity in the market.



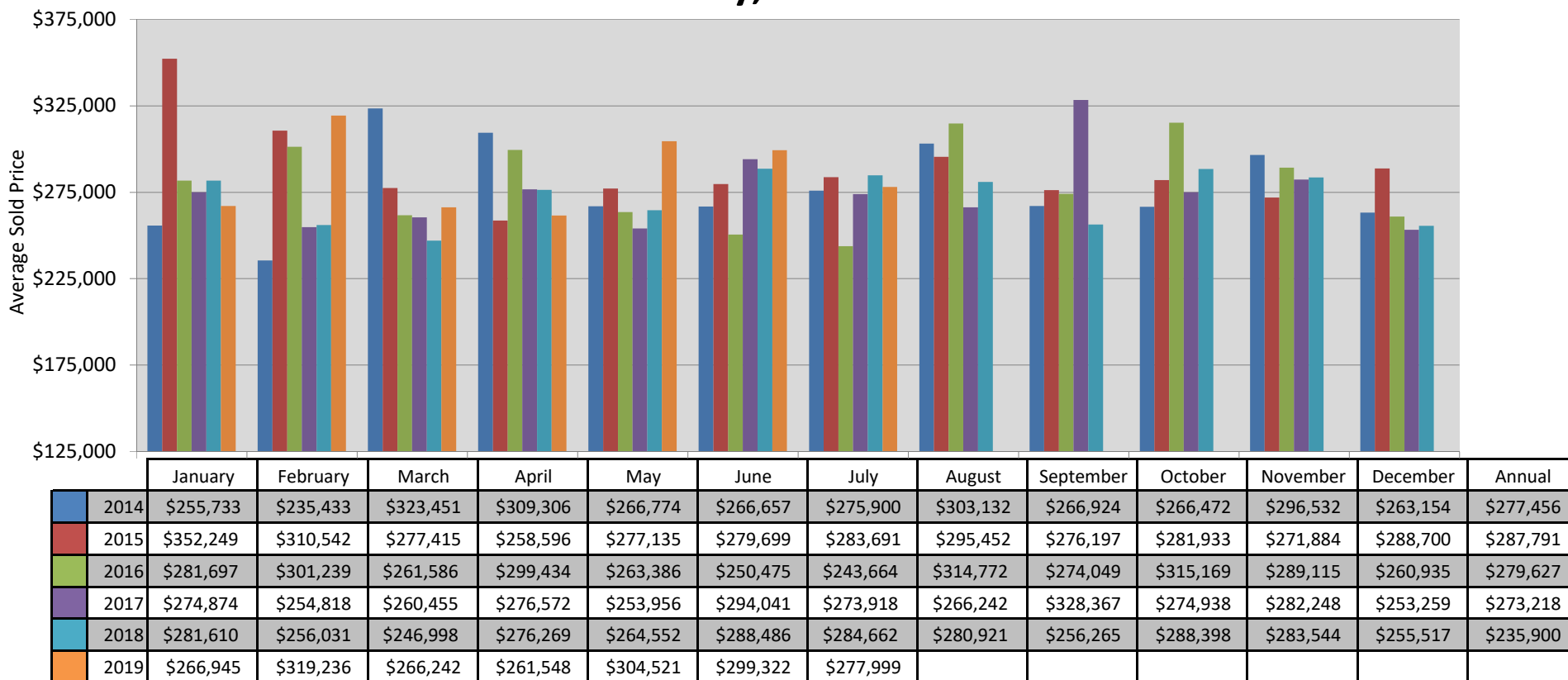
## Existing Single Family Homes Average Sold Price Per Month in Boone County, Missouri



This representation is based in whole or in part on the data supplied by the Columbia Board of REALTORS® (CBOR). CBOR does not guarantee nor is in any way responsible for its accuracy. Data maintained by CBOR may not reflect all real estate activity in the market.



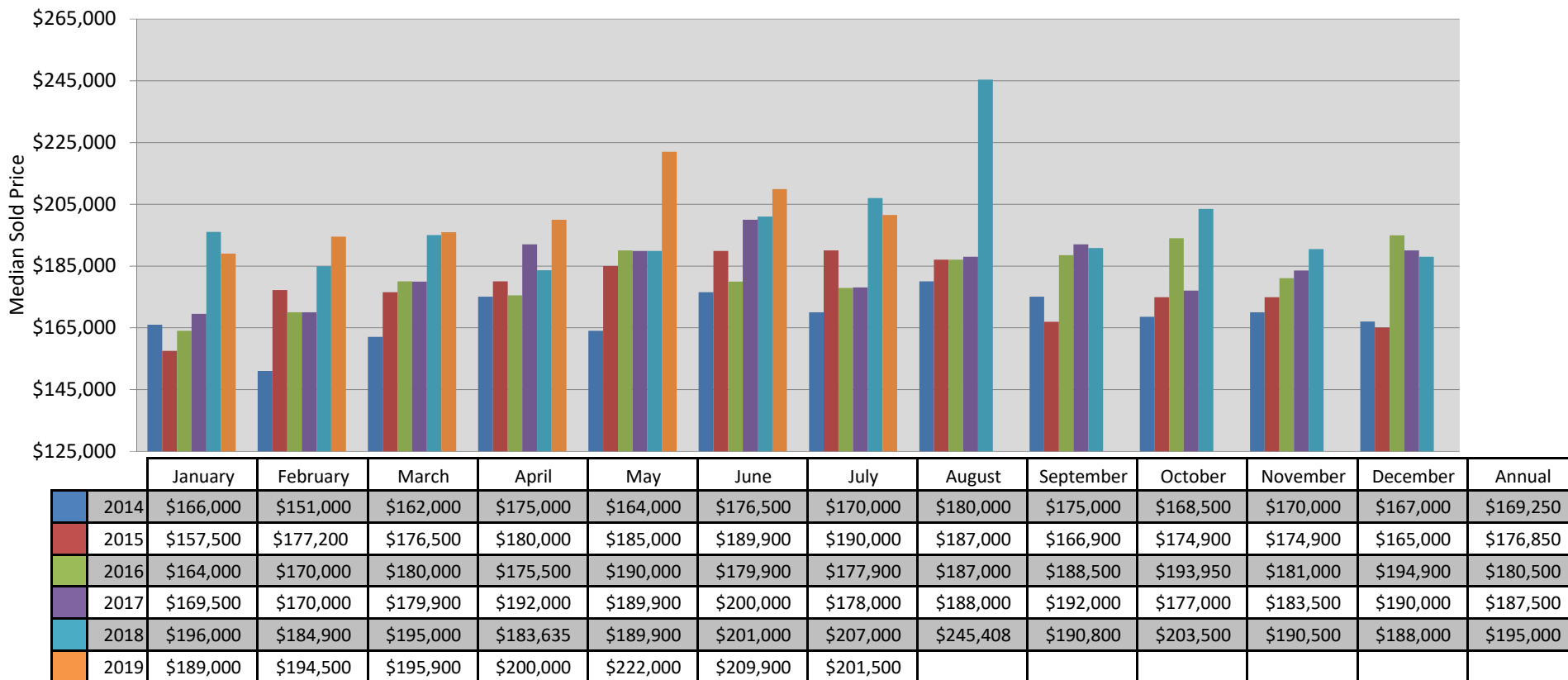
## New Construction Single Family Homes Average Sold Price Per Month in Boone County, Missouri



This representation is based in whole or in part on the data supplied by the Columbia Board of REALTORS® (CBOR). CBOR does not guarantee nor is in any way responsible for its accuracy. Data maintained by CBOR may not reflect all real estate activity in the market.



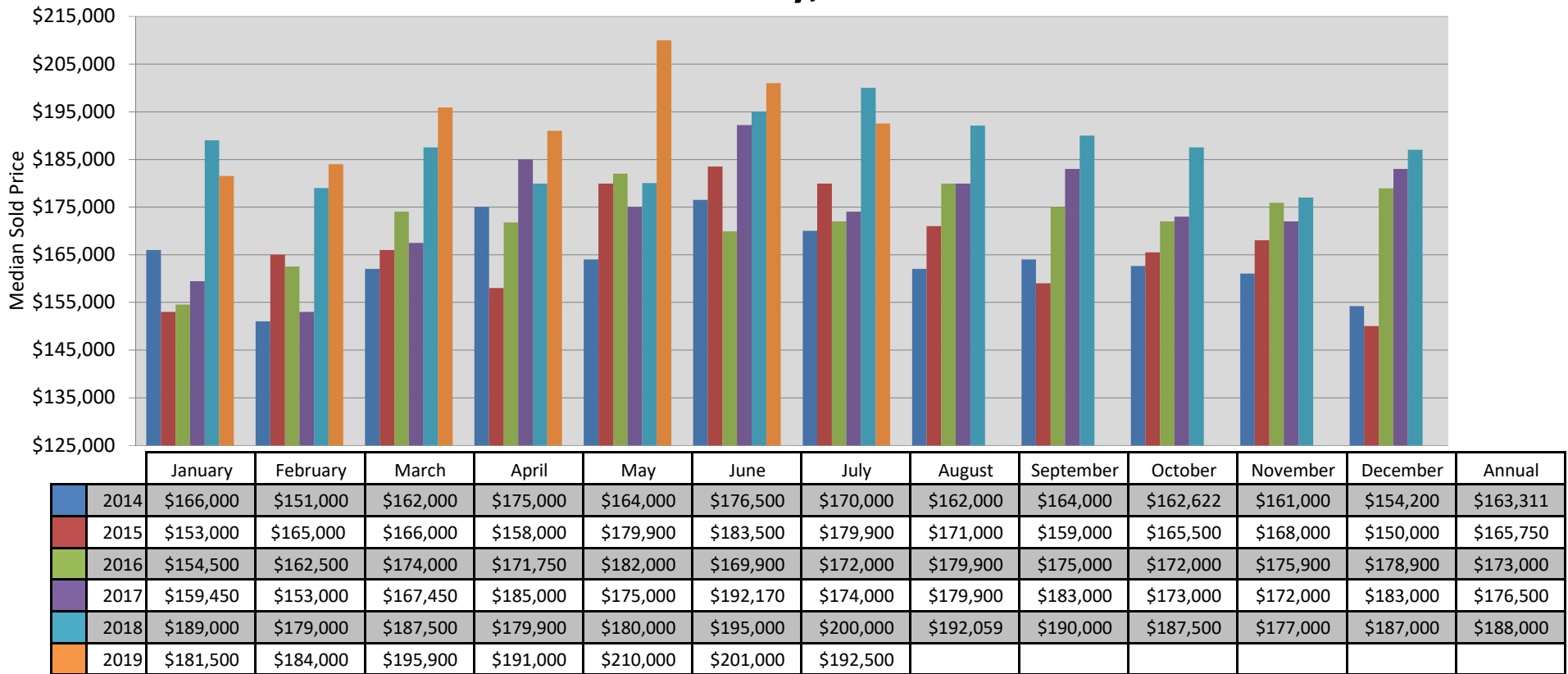
## Single Family Homes Median Sold Price Per Month in Boone County, Missouri



This representation is based in whole or in part on the data supplied by the Columbia Board of REALTORS® (CBOR). CBOR does not guarantee nor is in any way responsible for its accuracy. Data maintained by CBOR may not reflect all real estate activity in the market.



## Existing Single Family Homes Median Sold Price Per Month in Boone County, Missouri

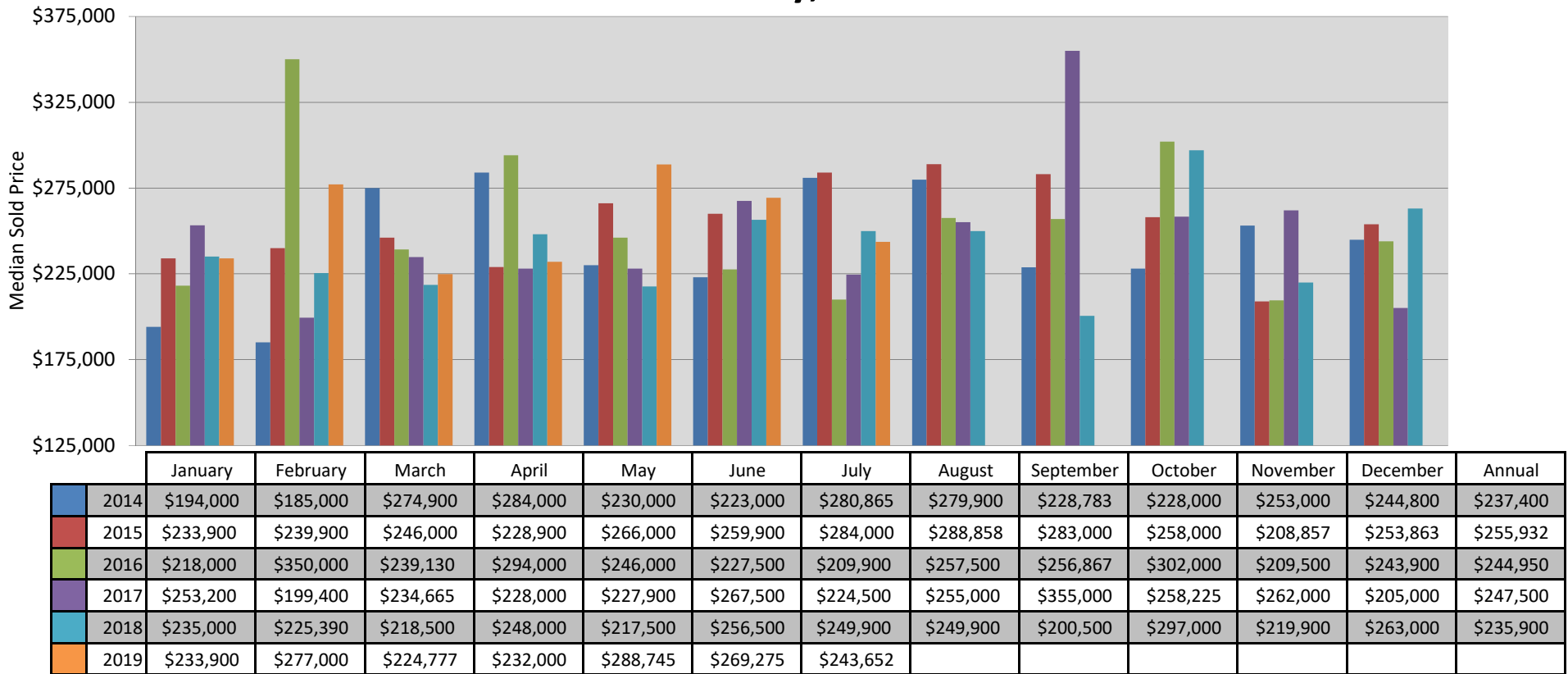


This representation is based in whole or in part on the data supplied by the Columbia Board of REALTORS® (CBOR). CBOR does not guarantee nor is in any way responsible for its accuracy. Data maintained by CBOR may not reflect all real estate activity in the market.





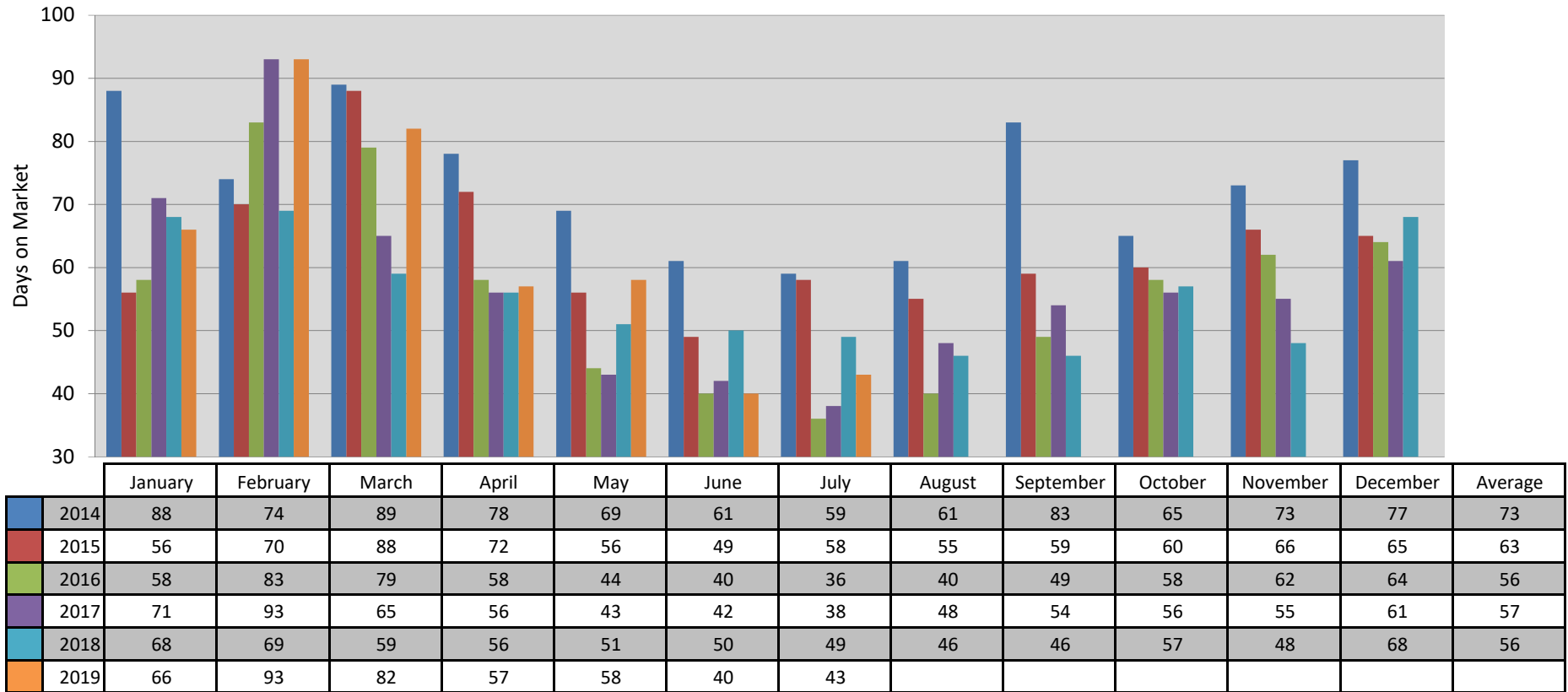
## New Construction Single Family Homes Median Sold Price Per Month in Boone County, Missouri



This representation is based in whole or in part on the data supplied by the Columbia Board of REALTORS® (CBOR). CBOR does not guarantee nor is in any way responsible for its accuracy. Data maintained by CBOR may not reflect all real estate activity in the market.



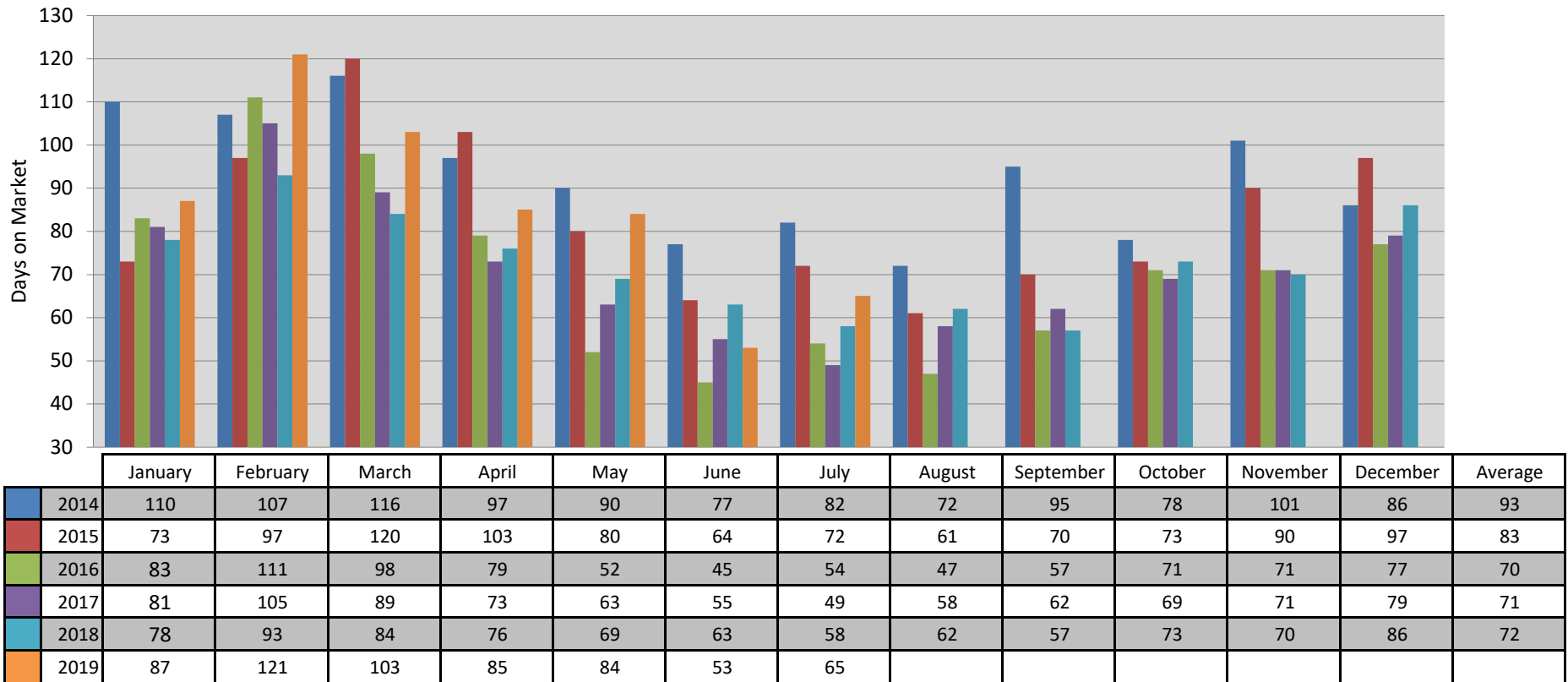
## Single Family Homes Average Days on Market Per Month in Boone County, MO



This representation is based in whole or in part on the data supplied by the Columbia Board of REALTORS® (CBOR). CBOR does not guarantee nor is in any way responsible for its accuracy. Data maintained by CBOR may not reflect all real estate activity in the market.



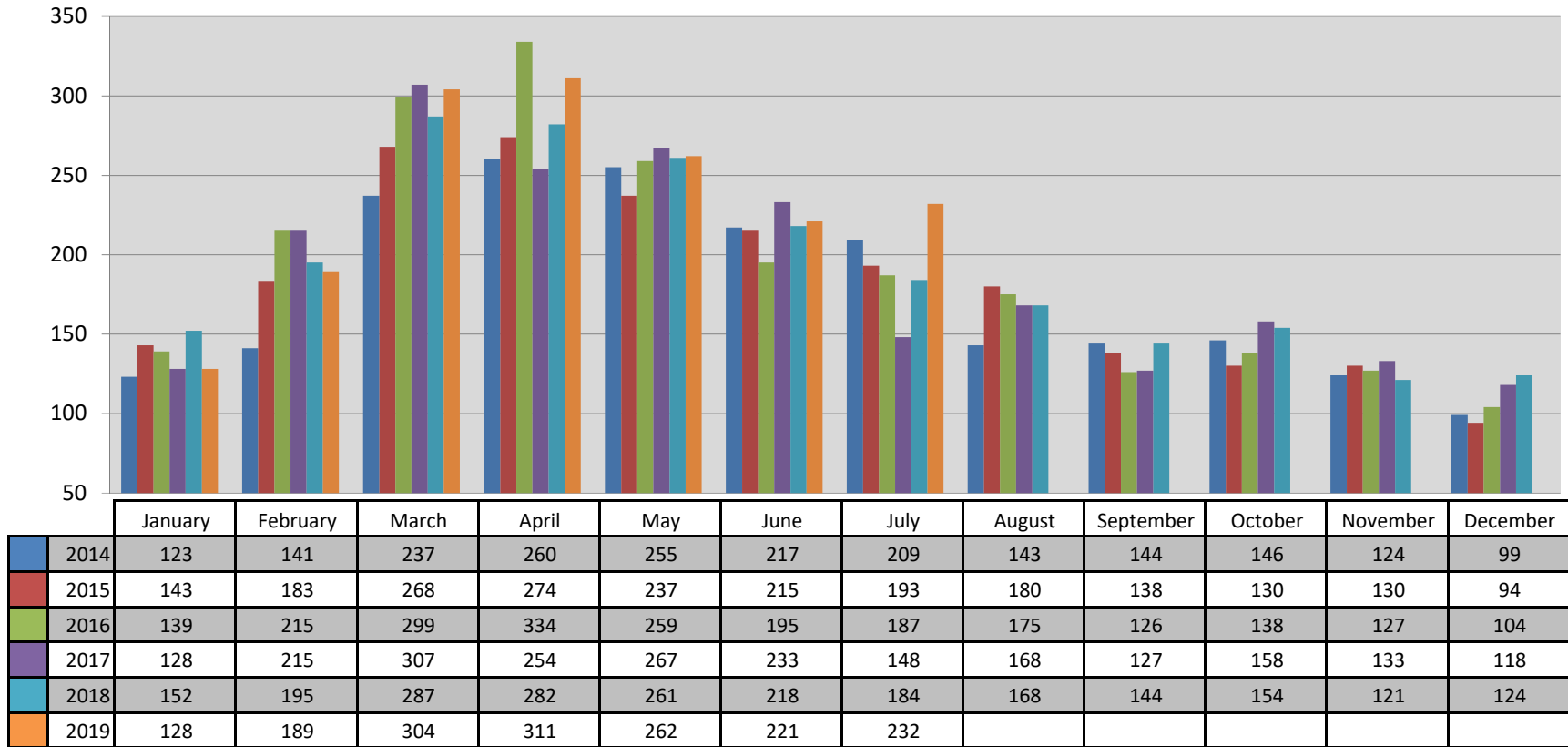
## Single Family Homes Average Cumulative Days on Market Per Month in Boone County, MO



This representation is based in whole or in part on the data supplied by the Columbia Board of REALTORS® (CBOR). CBOR does not guarantee nor is in any way responsible for its accuracy. Data maintained by CBOR may not reflect all real estate activity in the market.



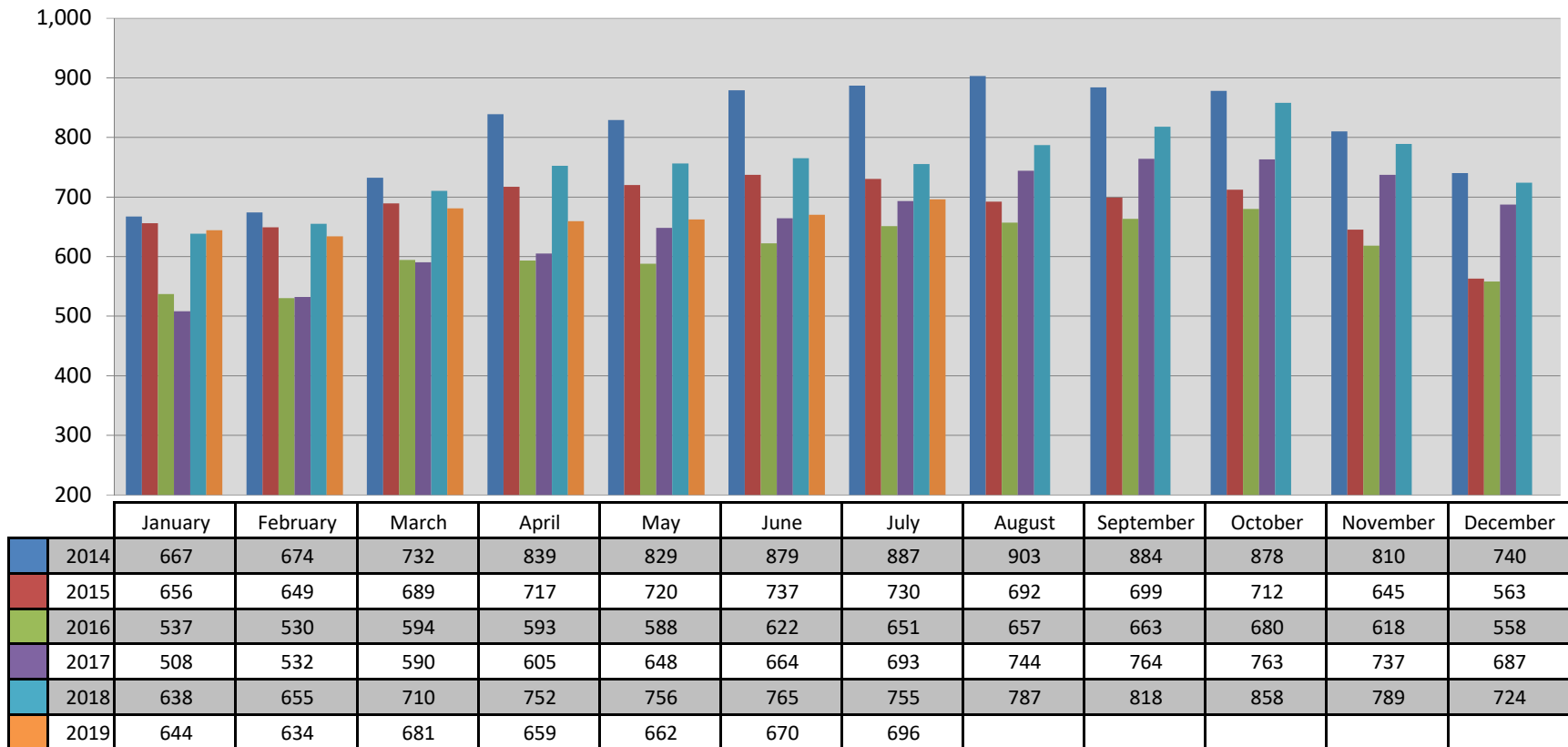
## Single Family Pending Listings on Market Per Month in Boone County, MO



This representation is based in whole or in part on the data supplied by the Columbia Board of REALTORS® (CBOR). CBOR does not guarantee nor is in any way responsible for its accuracy. Data maintained by CBOR may not reflect all real estate activity in the market.



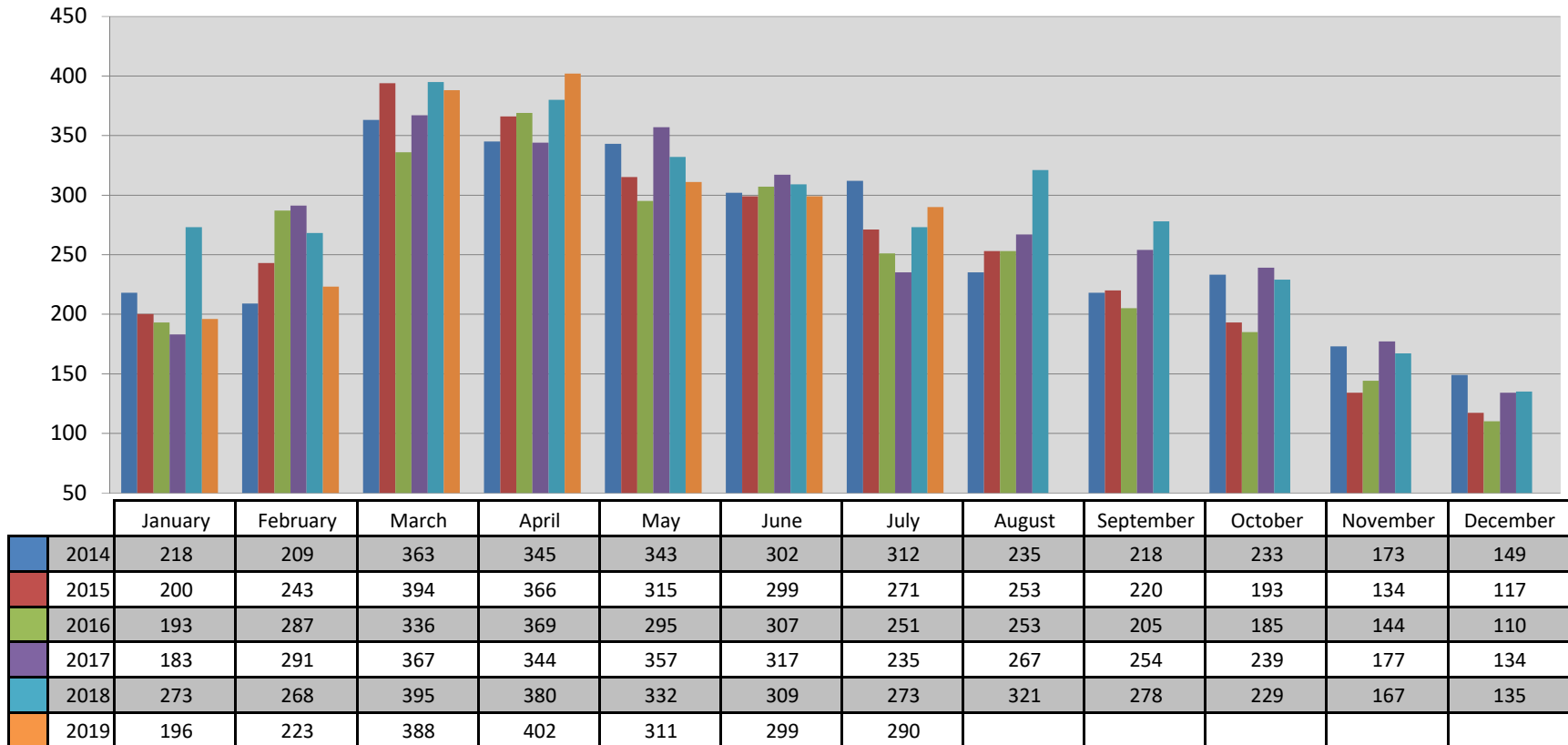
## Single Family Active Listings on Market Per Month in Boone County, MO



This representation is based in whole or in part on the data supplied by the Columbia Board of REALTORS® (CBOR). CBOR does not guarantee nor is in any way responsible for its accuracy. Data maintained by CBOR may not reflect all real estate activity in the market.



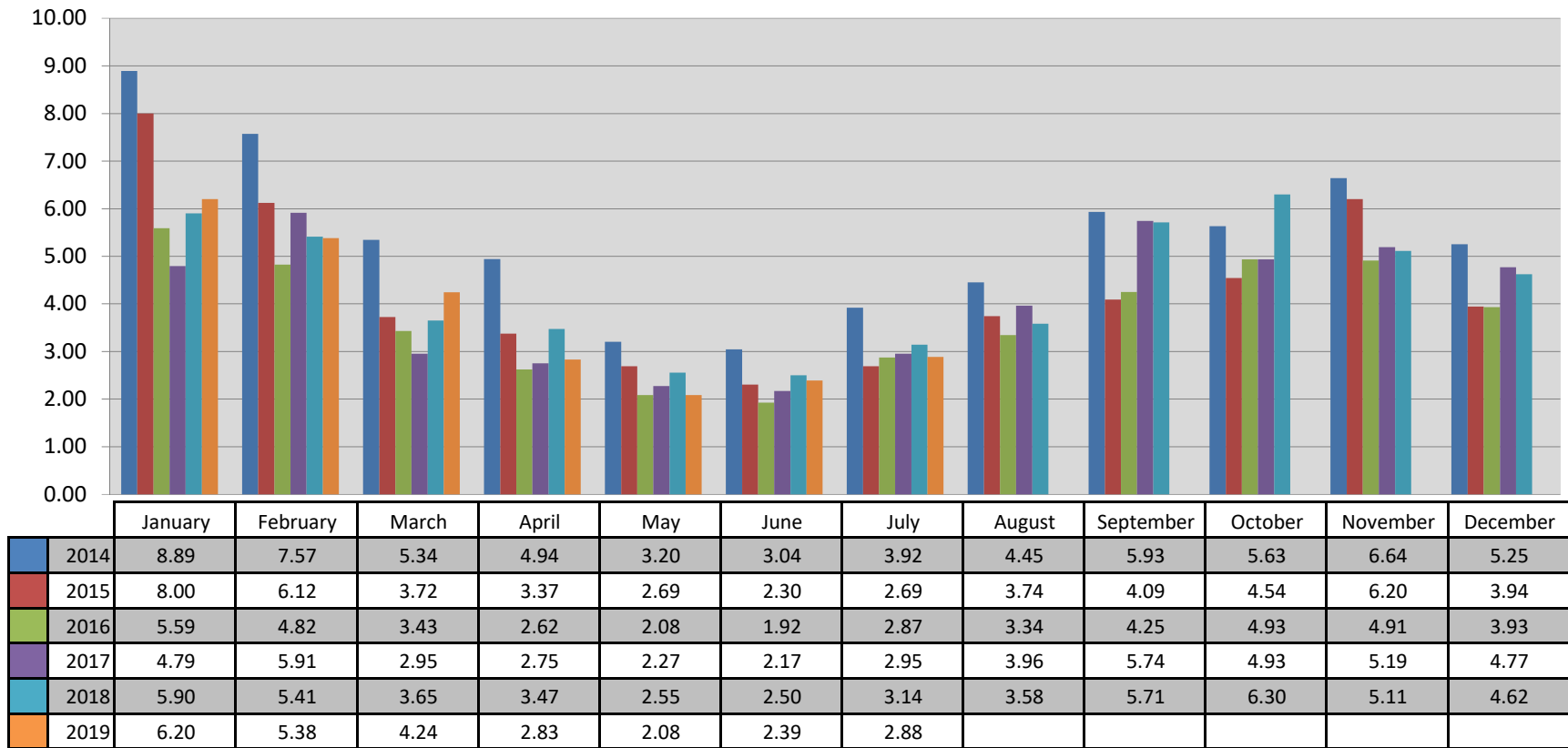
## Single Family New Listings Added to Market Per Month in Boone County, MO



This representation is based in whole or in part on the data supplied by the Columbia Board of REALTORS® (CBOR). CBOR does not guarantee nor is in any way responsible for its accuracy. Data maintained by CBOR may not reflect all real estate activity in the market.



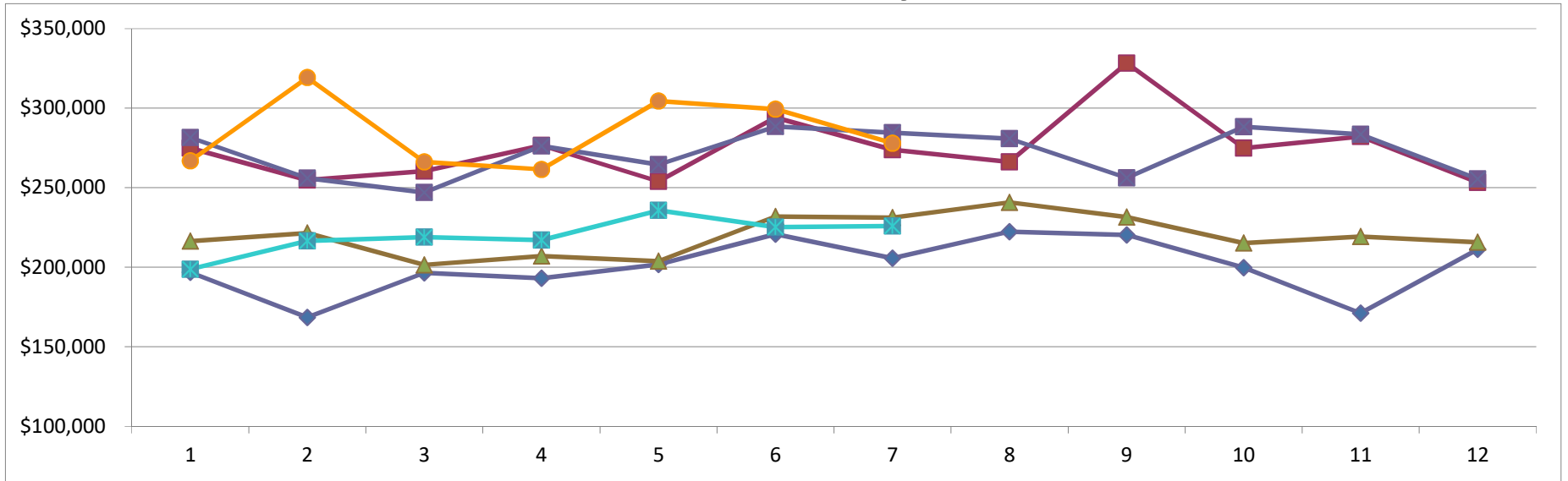
## Months Supply of Inventory of Single Family Homes in Boone County, MO



This representation is based in whole or in part on the data supplied by the Columbia Board of REALTORS® (CBOR). CBOR does not guarantee nor is in any way responsible for its accuracy. Data maintained by CBOR may not reflect all real estate activity in the market.



## New Construction Single Family Vs. Existing Homes Average Sold Price Per Month in Boone County, Missouri



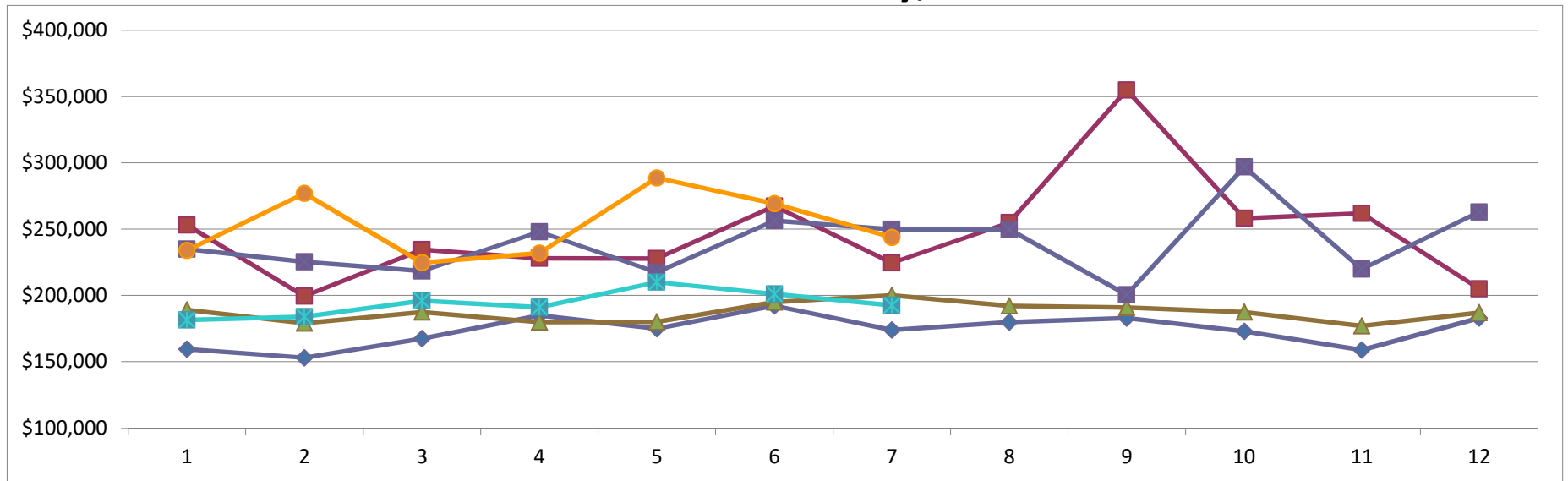
	January	February	March	April	May	June	July	August	September	October	November	December
2017 Existing	\$196,768	\$168,499	\$196,455	\$193,135	\$201,687	\$220,859	\$205,656	\$ 222,387	\$220,343	\$199,709	\$171,107	\$211,273
2017 New Const	\$274,874	\$254,818	\$260,455	\$276,572	\$253,956	\$294,041	\$273,918	\$ 266,242	\$328,367	\$274,938	\$282,248	\$253,259
2018 Existing	\$216,410	\$221,513	\$201,496	\$207,082	\$203,870	\$231,892	\$231,157	\$ 240,760	\$231,517	\$215,119	\$219,240	\$215,688
2018 New Const	\$281,610	\$256,031	\$246,998	\$276,269	\$264,552	\$288,486	\$284,662	\$ 280,921	\$256,265	\$288,398	\$283,544	\$255,517
2019 Existing	\$198,726	\$216,567	\$218,982	\$217,152	\$235,761	\$225,242	\$225,929					
2019 New Const	\$266,945	\$319,236	\$266,242	\$261,548	\$304,521	\$299,322	\$277,999					

This representation is based in whole or in part on the data supplied by the Columbia Board of REALTORS® (CBOR). CBOR does not guarantee nor is in any way responsible for its accuracy. Data maintained by CBOR may not reflect all real estate activity in the market.





## New Construction Single Family Vs. Existing Homes Median Sold Price Per Month in Boone County, Missouri



	January	February	March	April	May	June	July	August	September	October	November	December
2017 Existing	\$159,450	\$153,000	\$167,450	\$185,000	\$175,000	\$192,170	\$174,000	\$179,900	\$183,000	\$173,000	\$158,900	\$183,000
2017 New Const	\$253,200	\$199,400	\$234,655	\$228,000	\$227,900	\$267,500	\$224,500	\$255,000	\$355,000	\$258,225	\$262,000	\$205,000
2018 Existing	\$189,000	\$179,000	\$187,500	\$179,900	\$180,000	\$195,000	\$200,000	\$192,059	\$190,800	\$187,500	\$177,000	\$187,000
2018 New Const	\$235,000	\$225,390	\$218,500	\$248,000	\$217,500	\$256,500	\$249,900	\$249,900	\$200,500	\$297,000	\$219,900	\$263,000
2019 Existing	\$181,500	\$184,000	\$195,900	\$191,000	\$210,000	\$201,000	\$192,500					
2019 New Const	\$233,900	\$277,000	\$224,777	\$232,000	\$288,745	\$269,275	\$243,652					

This representation is based in whole or in part on the data supplied by the Columbia Board of REALTORS® (CBOR). CBOR does not guarantee nor is in any way responsible for its accuracy. Data maintained by CBOR may not reflect all real estate activity in the market.



## July 2019 Sold Single Fam Homes by Price Range for Boone County, MO

2018

Sold Listings	
List Price Range	# of Listings
\$0-\$99,999	12
\$100,000-\$149,999	36
\$150,000-\$199,999	63
\$200,000-\$249,999	44
\$250,000-\$299,999	28
\$300,000-\$349,999	19
\$350,000-\$399,999	14
\$400,000-\$449,999	7
\$450,000-\$499,999	8
\$500,000-\$749,999	6
\$750,000 - \$999,999	1
1000000+	0
<b>Total</b>	<b>238</b>

2019

Sold Listings	
List Price Range	# of Listings
\$0-\$99,999	20
\$100,000-\$149,999	41
\$150,000-\$199,999	58
\$200,000-\$249,999	41
\$250,000-\$299,999	29
\$300,000-\$349,999	21
\$350,000-\$399,999	16
\$400,000-\$449,999	5
\$450,000-\$499,999	4
\$500,000-\$749,999	5
\$750,000 - \$999,999	1
1000000+	1
<b>Total</b>	<b>242</b>

This representation is based in whole or in part on the data supplied by the Columbia Board of REALTORS® (CBOR). CBOR does not guarantee nor is in any way responsible for its accuracy. Data maintained by CBOR may not reflect all real estate activity in the market.



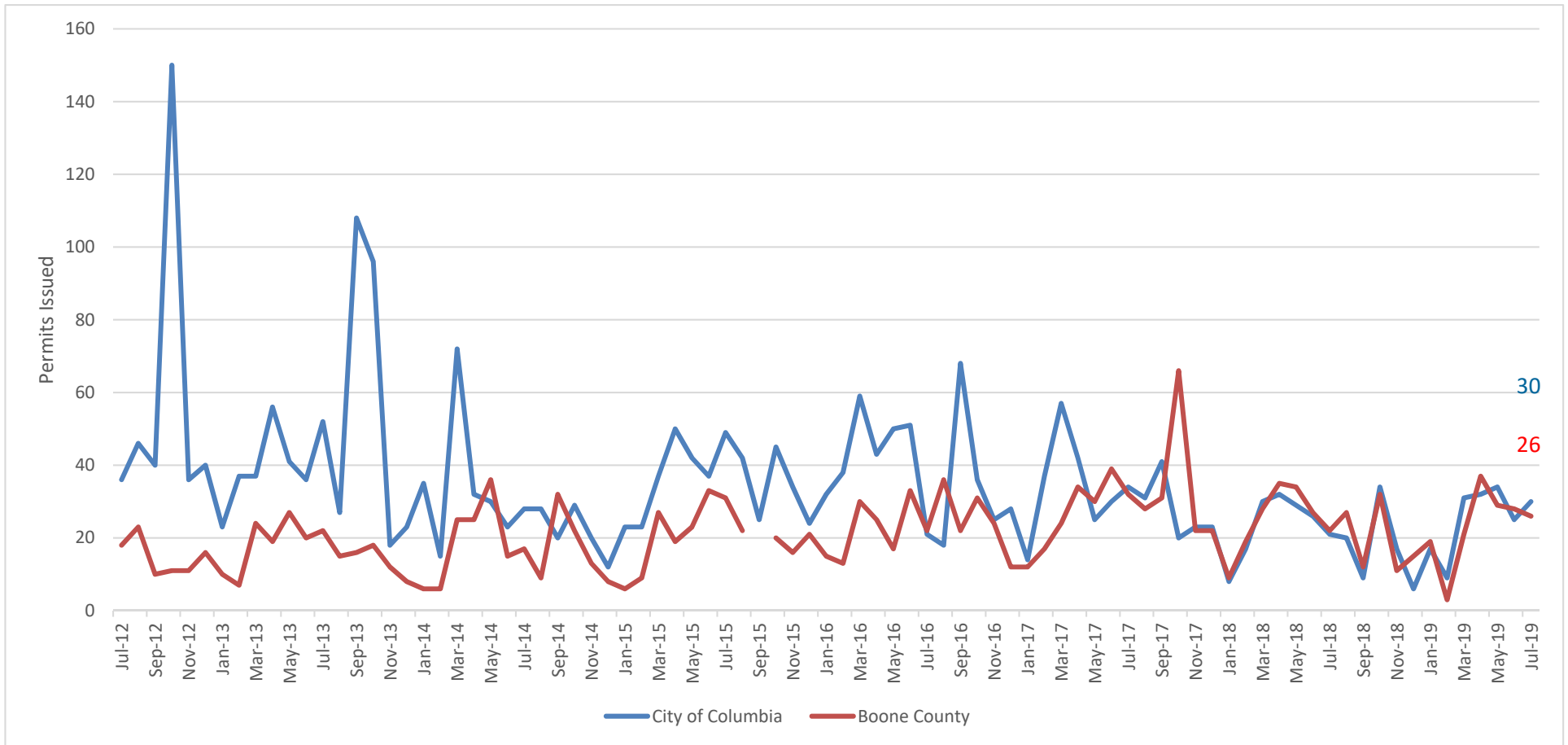
## July 2019 Single Family Residence Months Supply of Inventory by Price Range for Boone County, MO

Sold Listings	
List Price Range	# of Months Supply
\$100,000-\$149,999	1.53
\$150,000-\$199,999	2.02
\$200,000-\$249,999	2.37
\$250,000-\$299,999	3.81
\$300,000-\$349,999	3.47
\$350,000-\$399,999	2.57
\$400,000-\$449,999	5.60
\$450,000-\$499,999	6.75
\$500,000-\$749,999	17.25

This representation is based in whole or in part on the data supplied by the Columbia Board of REALTORS® (CBOR). CBOR does not guarantee nor is in any way responsible for its accuracy. Data maintained by CBOR may not reflect all real estate activity in the market.



## New Residential Single Family Detached Building Permits Issued By City of Columbia & Boone County, MO



This representation is based in whole or in part on the data supplied by the Columbia Board of REALTORS® (CBOR). CBOR does not guarantee nor is in any way responsible for its accuracy. Data maintained by CBOR may not reflect all real estate activity in the market.